

# ALBUQUERQUE

Official City Website


[HOME](#)
[LIVING](#)
[VISITING](#)
[BUSINESS](#)
[A-Z](#)
[SUSTAINABILITY](#)

[Zoo Home](#)  
[BioPark Home](#)  
[Cultural Services Department Home](#)

## General Information

[Frequently Asked Questions \(FAQs\)](#)  
[Jobs at the BioPark](#)

## News & Events

[Zoo News](#)  
[BioPark Event Calendar](#)  
[ZooMusic Concerts](#)

## Where to Go, What to Do

[Daily Activities & Feeding Times](#)  
[Exhibit Areas](#)  
[Trains](#)  
[Shops, Restaurants & Other Services](#)

## Education

[Outreach & Teacher Resources](#)  
[Fee-Based Programs](#)  
[School Field Trips](#)

## Volunteer & Membership

[Volunteer Program](#)  
[Membership & Donations](#)

## Facility Rentals & Weddings


[Facility Rentals](#)  
[Weddings & Birthday Parties](#)  
[Catering](#)

## Other BioPark Facilities

[Albuquerque Aquarium](#)  
[Rio Grande Botanic Garden](#)  
[Tingley Beach](#)

## Contact

Address  
 903 Tenth Street SW  
 Albuquerque, NM 87102  
 Phone: 311 locally or (505) 768-2000  
 Fax: (505) 764-6281  
 Email: [biopark@cabq.gov](mailto:biopark@cabq.gov)

 Smoking is prohibited on all BioPark property.

## Rio Grande Zoo



Founded in 1927, the 64-acre Rio Grande Zoo offers visitors close encounters with more than 250 species of exotic and native animals. Popular species include seals and sea lions, chimpanzees, gorillas, orangutans, elephants, polar bears, giraffes, hippos, camels, tamarins, koalas, Mexican wolves, mountain lions, monkeys, jaguars, zebras and rhinoceros. State-of-the-art exhibit design and eye-pleasing landscaping enhance zoo animal husbandry by creating naturalistic habitats with trees, grasses, water features and rockwork. Walking distance through the zoo is about 2.25 miles. The Rio Grande Zoo is a facility of the [Albuquerque Biological Park](#).


[This Month at the Zoo](#)  
[Daily Activities and Feeding Times](#)  
[Train Schedules](#) (Trains do not operate on Mondays.)

[Location](#)  
[Hours of Operation](#)  
[Admission Information](#)

### Online Ticket Sales

You can now buy tickets online with your Visa, Mastercard or American Express! If you have never purchased tickets online or have problems with your online purchase, please review [Online Ticket Sales Assistance](#) information.

[Buy General Admission Tickets](#)  
[Buy Summer Concert Tickets](#)  
[Buy BioPark Society Member Concert Tickets](#)

[Zoo Map](#)   
[For Persons with Disabilities](#)  
[Frequently Asked Questions \(FAQs\)](#)  
[Institutional Memberships](#)

Please note that the Rio Line Train will be running as usual Tuesday through Sunday. The Zoo Train and Rio Line Train are always closed for maintenance on Mondays. No train tickets or combo tickets are sold on Mondays.

## This Month at the Zoo

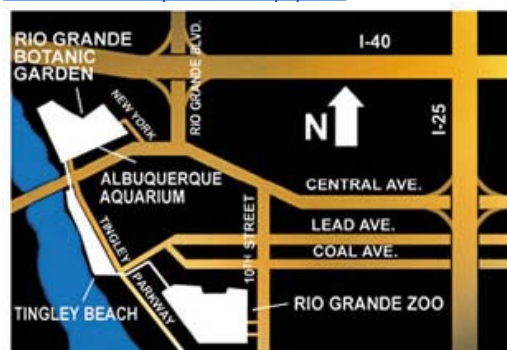
- » [Run for the Zoo](#) - May 3
- » [International Migratory Bird Day at the Zoo](#) - May 10
- » [Mother's Day Symphony Concert at the Zoo](#) - May 10
- » [Bear Awareness Week](#) - May 10 through May 16
- » [Summer Volunteer Orientation](#) - May 16
- » [More May events at the BioPark](#)
- » The [polar bears](#) may often be seen swimming or diving for fish treats in the afternoons. [Feeding](#) at the seals and sea lions continues as usual.
- » Check out [Daily Activities](#) and the [BioPark Calendar](#) for details on other happenings events this month.

[top](#)

## Location

903 Tenth Street SW, south of Lead and Coal and north of Bridge Blvd.

[Interactive map from Mapquest](#)



[top](#)

## For Persons with Disabilities

If you have a disability and require special assistance when you visit the BioPark, please call (505) 768-2000 or 311 (Relay NM or 711), preferably with three days advance notice.

## Institutional Memberships

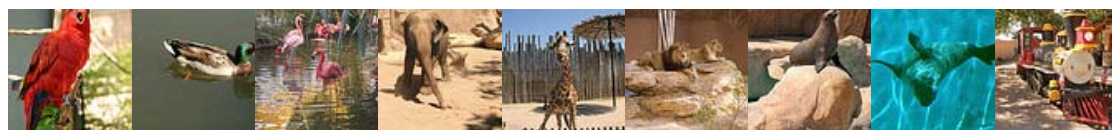
**ASSOCIATION OF ZOOS & AQUARIUMS** The Albuquerque Biological Park is accredited by the American Zoo and Aquarium Association (AZA). Look for the AZA logo whenever you visit a zoo or aquarium as your assurance that you are supporting a facility dedicated to providing excellent care for animals, a great experience for you and a better future for all living things. With its more than 200 accredited members, AZA is a leader in global wildlife conservation and your link to helping animals in their native habitats.



**World Association  
of Zoos and Aquariums  
(WAZA)**  
UNITED FOR CONSERVATION

The Albuquerque Biological Park is a member of the World Association of Zoos and Aquariums whose mission is to guide, encourage and support the zoos, aquariums, and like-minded organisations of the world in animal care and welfare, environmental education and global conservation.

[top](#)



Translate this page: [Español](#) | [Français](#) | [Deutsch](#)

[News](#) | [Calendar](#) | [About](#) | [Contact Us](#) | [Disclaimer & Legal Statements](#) | [Website Feedback?](#)

Copyright © 1994-2009 City of Albuquerque. All rights reserved.  
Official website for the City of Albuquerque [www.cabq.gov](http://www.cabq.gov)